

# SOUTH MELBOURNE 202 Park Street



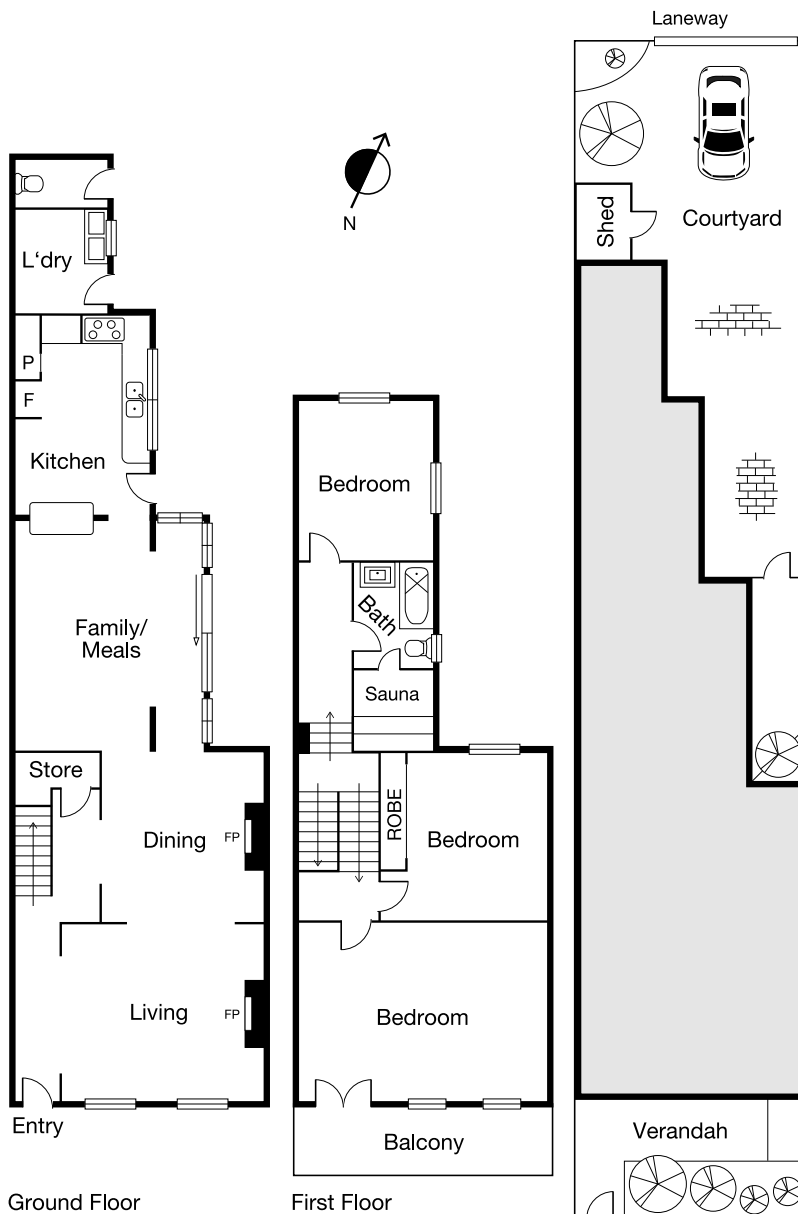
# CAYZER

## CLASSIC VICTORIAN WITH RENOVATION APPEAL

- Classic two storey Victorian balconied terrace
- Brilliantly located in the heart of historic South Melbourne
- Deep north-west facing allotment of approximately 184 m2

Comprising: Downstairs: light-filled spacious front living room (OFF) and dining room (OFF), functional kitchen with family room, and laundry facilities. Upstairs: oversized master bedroom with access to balcony, second double bedroom, large sauna, modern central bathroom, sun-filled third bedroom.

The No.1 and No.12 city tram, popular Clarendon Street shopping strip, MSAC and iconic South Melbourne Market all nearby. First time offered in over 60 years! Note: Private rear courtyard with rear car access via Palmer Street.



	3	1	1
<b>Auction</b>	Saturday 4 May at 12pm		
<b>Inspection</b>	As advertised or by appointment		
<b>Contact</b>	Andrew Turner	0408 211 281	
	Geoff Cayzer	9690 9782	
	Jason De Stefano	0413 292 666	
<b>Mel Ref</b>	57 H1		



Interactive Floorplan